



COMMERCIAL

# MOUNTAIN VIEW BUSINESS CTR

OFFICE SPACE FOR SUBLEASE / 800 S. INDUSTRY WAY / MERIDIAN, ID 83642

**CENTRALLY LOCATED  
OFFICE SPACE  
FOR SUBLEASE**

## NICK SCHUITEMAKER

208.947.0802

[nick@tokcommercial.com](mailto:nick@tokcommercial.com)

## MIKE GREENE SIOR, CCIM

208.947.0835

[mikeg@tokcommercial.com](mailto:mikeg@tokcommercial.com)

## PETER OLIVER SIOR, CCIM

208.947.0816

[peter@tokcommercial.com](mailto:peter@tokcommercial.com)

## HIGHLIGHTS

Easy freeway access.

Quality block construction.

Excellent visibility and signage.

Well maintained and professionally managed.

Sublease through 07/31/2024. Option for longer term.

Centrally located with convenient access to a variety of amenities.

## AVAILABLE

SPACE	SIZE	RATE
BLDG 800 Ste. 300	1,708 SF	\$13.11/SF, NNN

**CONTACT AGENTS FOR SHOWINGS**

UPDATED: 3.28.2023

THIS PROPERTY IS EXCLUSIVELY MARKETING BY TOK BOISE LLC DBA TOK COMMERCIAL.

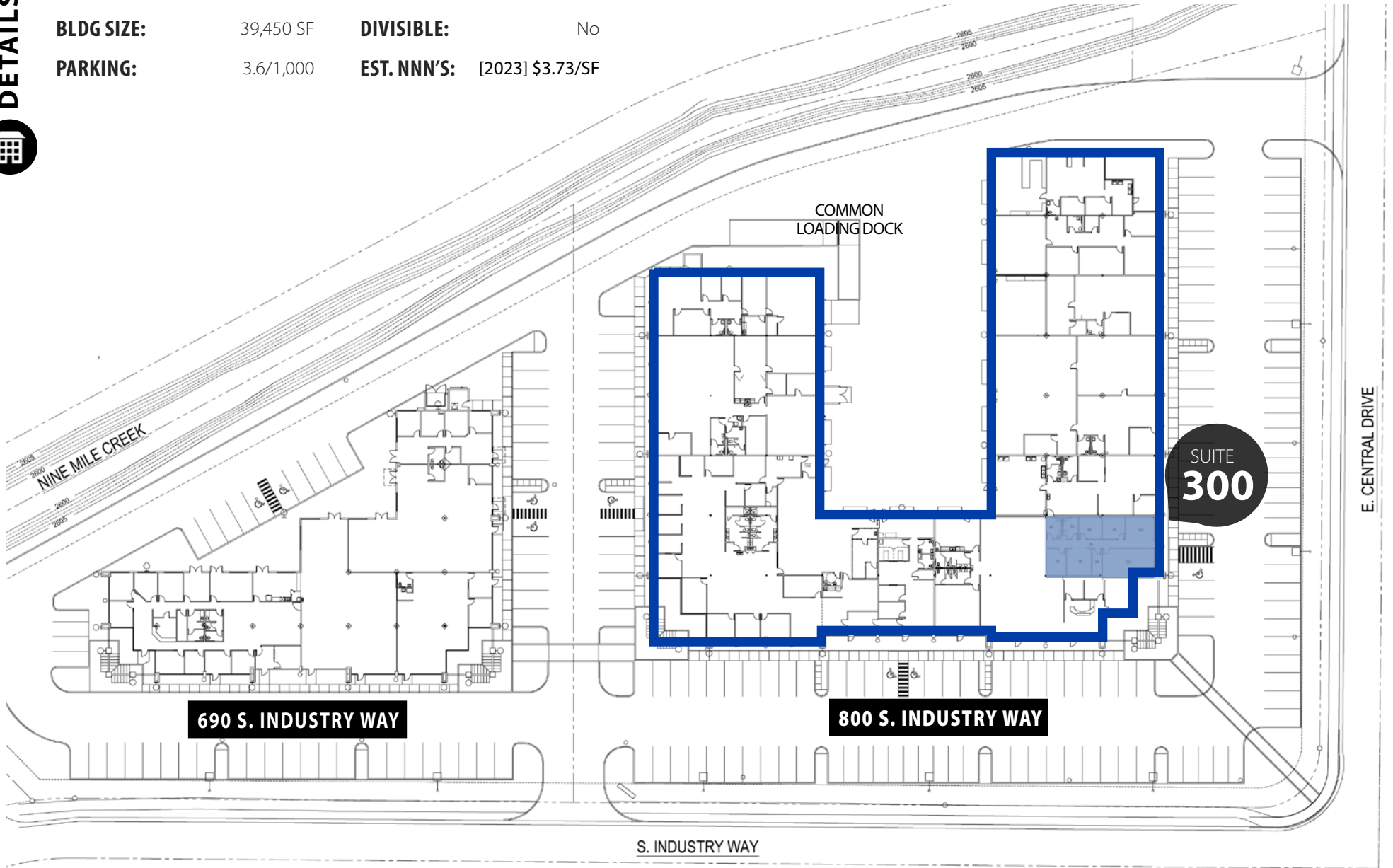
**Tok**COMMERCIAL.COM

# DETAILS



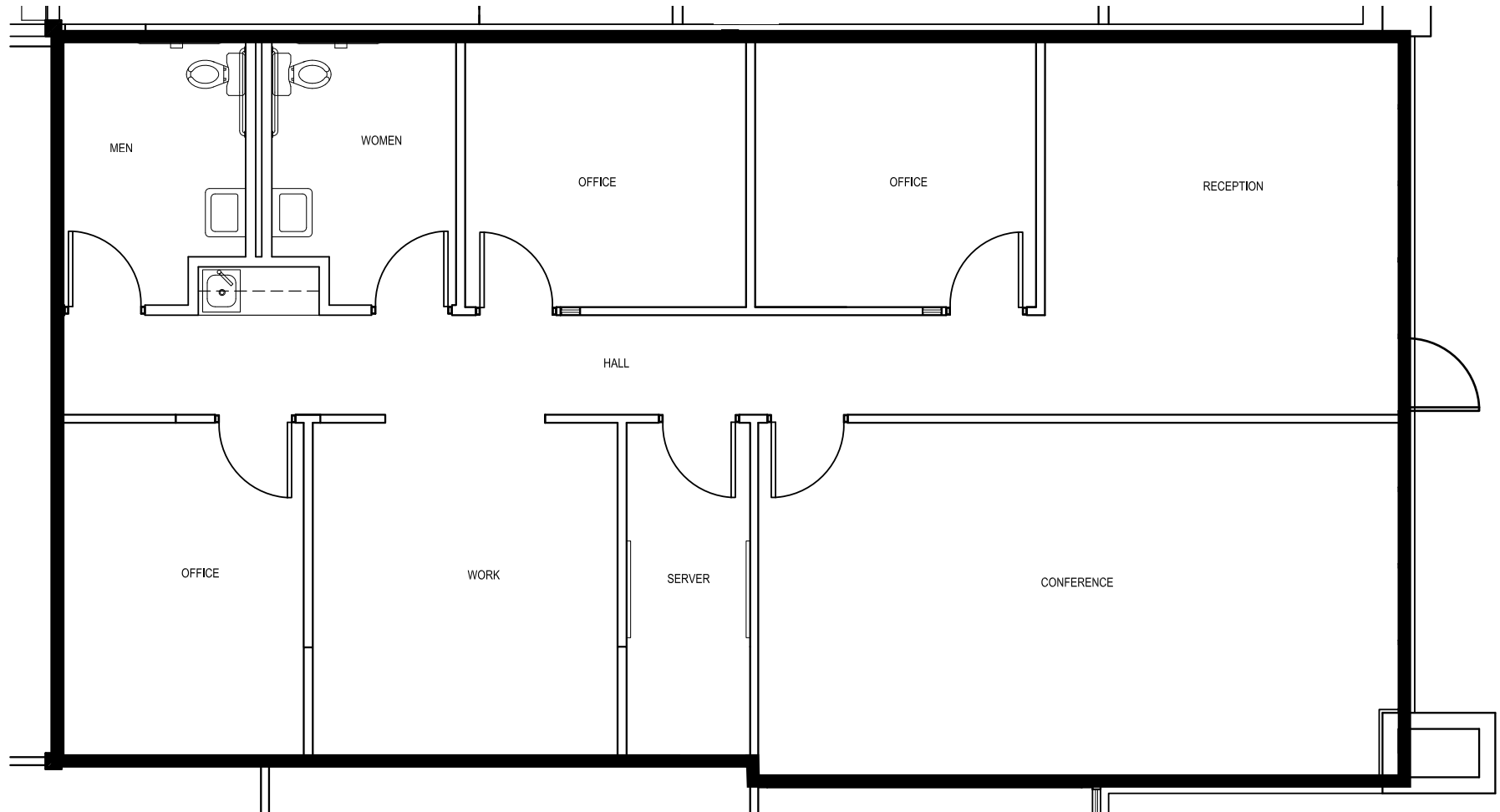
<b>SUBMARKET:</b>	Meridian	<b>ZONING:</b>	C-G
<b>BLDG TYPE:</b>	Office/Warehouse	<b>LEASE TYPE:</b>	NNN
<b>BLDG SIZE:</b>	39,450 SF	<b>DIVISIBLE:</b>	No
<b>PARKING:</b>	3.6/1,000	<b>EST. NNN'S:</b>	[2023] \$3.73/SF

# SITE PLAN



# BUILDING 800

## SUITE 300 - 1,708 SF







**TOK**  
COMMERCIAL



GARRITY BLVD

MERIDIAN  
SPEEDWAY

WATERTOWER ST

STATE POLICE  
IDAHO

CENTRAL DR

IDAHO FINE  
ARTS ACADEMY

SITE

CENTRAL PARK PLAZA



EXIT 44

MERIDIAN ROAD

STRATFORD DR